



ASCENT CAST TECH

**PROTOTYPE TO PRODUCTION  
PRECISION CASTINGS READY TO PERFORM**

[www.ascentcast.com](http://www.ascentcast.com)

## ABOUT US

- **Established in 2009** – Over a decade of expertise in precision casting and machining.
- **Prototype & Production Specialists** – Expertise in developing prototype cast parts and supplying high-quality machined-cast components.
- **ISO 9001:2015 Certified** – Commitment to quality and industry standards.
- **Global Reach** – Exports contribute to over 50% of our revenue.
- **State-of-the-Art Facilities** – 15,000 sq. ft. machining facility and 60,000 sq. ft. foundry for comprehensive manufacturing solutions.

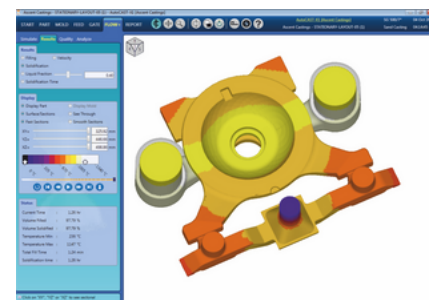
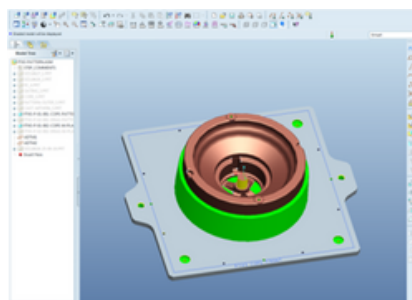
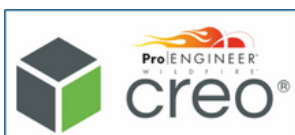


## ENGINEERING

Leading CAD/CAM software for tooling and casting design .

Casting Methoding & Development using Simulation for mold filling and solidification validation

- Pro Engineer
- SolidWorks
- Casting Simulation AUTOCASE X

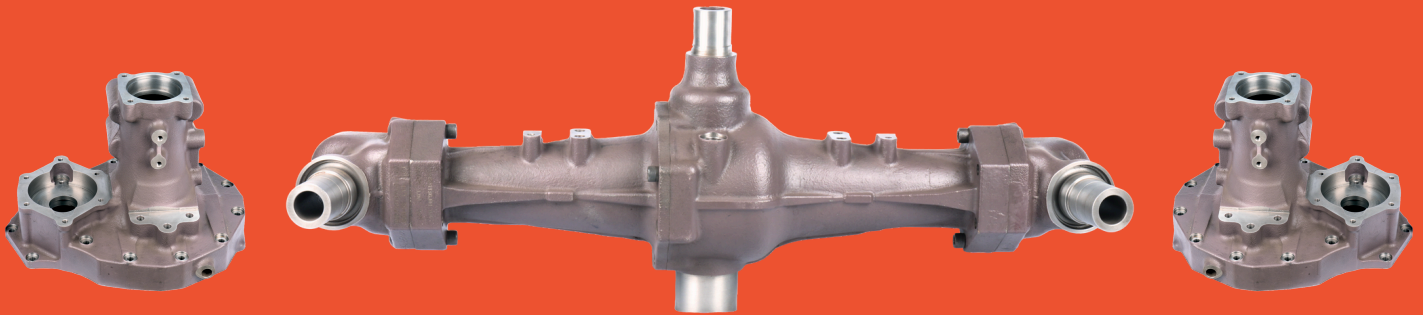


## NO BAKE SAND CASTING

- Annual Capacity – 3600 MT (300 MT/Month)
- Casting Weight Range – 1.0 kg to 750kg.
- Melting Furnace Capacity - 1000 kg (500x2 Dual track)
- Material Casts– Cast Iron, Ductile Iron, Alloy Steel and Stainless Steel



Sand 3D printing technology is also available through associates.



## LOST WAX CASTING

- Annual Capacity – 600 MT (50 MT/Month)
- Casting Weight Range – 0.1 kg to 50 kg.
- Melting Furnace Capacity – 50 kg and 150 kg
- Material Casts–Alloy Steel and Stainless Steel



Wax 3D printing technology is also available through associates.

## GRAVITY DIE CASTING

- Annual Capacity – 60 MT (5 MT/Month)
- Casting Weight Range – 0.5 kg to 40 kg.
- Melting Furnace Capacity – 100 kg
- Material Casts–Aluminium Alloy

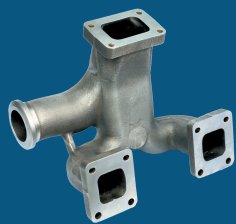
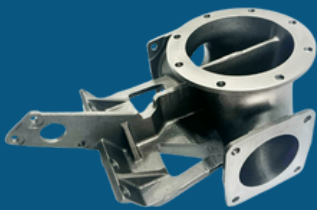
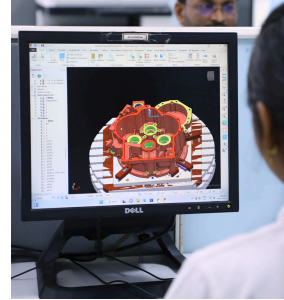




## MACHINE SHOP

We have a large machine shop equipped with precision CNC machines.

- 5 Axis – Up to 750 x 650 x 600 mm – 02 Nos.
- VMC – Up to 1300 x 700 x 600 mm – 03 Nos.
- HMC – Up to 1000 x 1000 x 900 – 8 Nos.
- CNC Turning – up to Dia 430 x 700 L – 01 No.
- CNC VTL – up to Dia 1000 x 850 L – 01 Nos.



## QUALITY

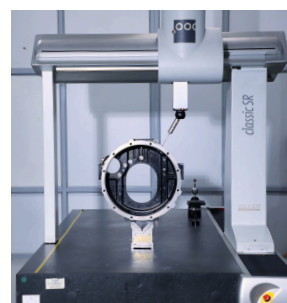
Dedicated quality assurance lab equipped with advanced inspection and testing systems for precision and reliability.

- 3D CMM - 1500 x 900 x 900
- Portable CMM - FARO Gauge
- Standard Gauges
- Air and Hydraulic Leakage Testing
- Spectrometer
- Image Analyzer
- UTM Machine
- Complete Sand Testing



NDT Inspection with associates

ISO 9001:2015





## WHY PARTNER WITH US?

### End-to-End Casting Solutions

From design to finished components, including casting, machining & assembly under one roof.

### Faster Time-to-Market

Optimized prototype-to-production cycles for rapid product development.

### Cost-Effective & Low MOQ

No high Minimum Order Quantity constraints, making production flexible & economical.

### Precision Machined Castings

Meeting global quality standards with advanced materials and strict compliance.

### Flexible & Scalable Production

Customized small-to-medium batch manufacturing tailored to customer needs.

### Reliable & On-Time Delivery

Ensuring precision, efficiency, and a customer-first approach for every order.

## INDUSTRIES WE SERVE



**Automotive**  
(Truck & Bus)



**Power and  
Energy**



**Farm and  
Construction  
Equipment**



**Fluid  
Transportation**



**General  
Engineering**

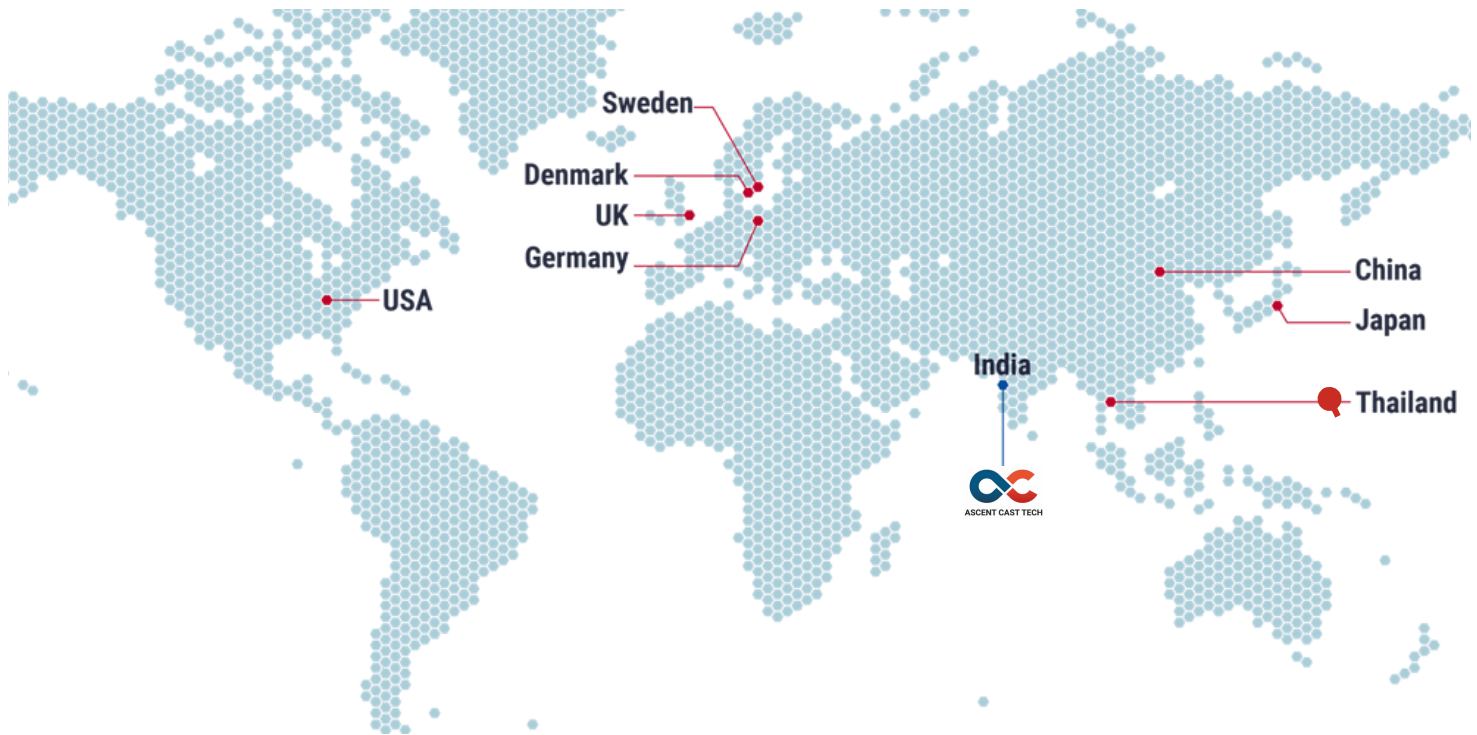


**Mining and Heavy  
Equipment**

## EXPERTISE TO CAST VARIETY OF MATERIALS

Grey Cast Iron	Ductile Iron	Alloy Steel	Non-Ferrous
FG 220	SGI 400/18	CF8	Aluminium Alloys
FG 260	SGI 450/12	CF8M	
FG 300	SGI 500/7	CF8C	LM4
FG 350	SGI 600/3	CF3	LM6
FG 400	SGI 700/2	CF3M	LM9
	SGI 900/2	Ni-Hard	LM24
	ADI 800-1200	Other Alloys	LM25
	SGI SiMo 500/7		

We also supply special alloys tailored to specific mechanical and thermal requirements



SUPPLYING TO CUSTOMERS ACROSS  
USA, GERMANY, DENMARK, SWEDEN, CHINA, THAILAND AND JAPAN

 **Perkins®**



 **Atlas Copco**

 **CNH  
INDUSTRIAL**



**JOHN DEERE**

 **CATERPILLAR®**



Machining Facility  
Ascent Castings Technologies  
Plot No PAP 108/2, Phase III  
MIDC Chakan, Pune  
Maharashtra, India - 410501

Foundry  
Ascent Cast India LLP  
Plot No C88, Surwadi MIDC,  
Phaltan, Satara  
Maharashtra, India - 415528

